

The Artisan

1,788 Sq. Ft.



A classic traditional house with full brick or stone façade gives you a warm invitation to enter. The Artisan is a compact bungalow with 1,788 sq. ft of very functional space all on one level. An oversized walk-in pantry is one of the many highlights this kitchen features. An open and spacious great room as well as dining room creates a space perfect for entertaining groups of any size. Continuing along, the master bedroom boasts a large walk-in closet as well as a soaker tub and glassed in shower in the ensuite bathroom. The second bedroom on the main floor also has a generous amount of space and has potential to become a den, music or hobby room. This lower level has been designed to add significantly to your home with an additional two bedrooms, a full bathroom, and an open recreation area with fireplace. There is plenty of room for storage as well.

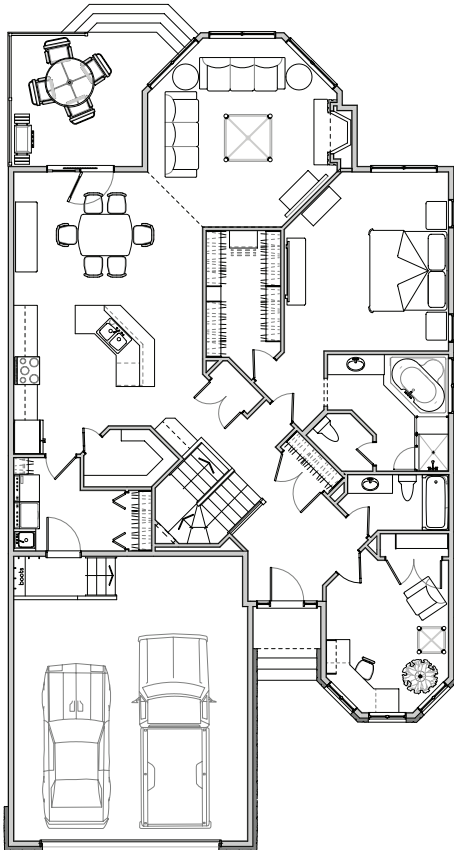
Features:

- » Bungalow
- » 3 bedrooms
- » 3 bathrooms
- » Double garage
- » Extra large custom shower in the ensuite
- » Custom millwork
- » Main floor laundry
- » Generous closet storage
- » Maintenance-free exterior

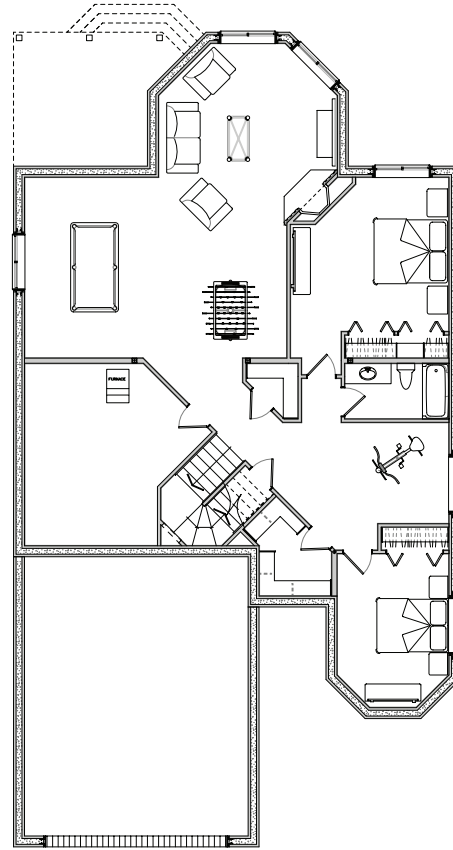
*Artist Rendering. Plans and prices are subject to change without notice. This floor plan is the property of Kensington Master Builders Inc. and may not be copied, reproduced, transmitted, distributed, altered or otherwise used in whole or in part without the express written permission of Kensington Master Builders Inc.

Floor Plan*

1,788 Sq. Ft.



Main Floor
Area: 1,788 Sq. Ft.



Basement
Area: 1,287 Sq. Ft.

Notes:

*Artist Rendering. Plans and prices are subject to change without notice. This floor plan is the property of Kensington Master Builders Inc. and may not be copied, reproduced, transmitted, distributed, altered or otherwise used in whole or in part without the express written permission of Kensington Master Builders Inc.



Benefits of Choosing a Kensington Home

With integrity, understanding, and over 20 years of experience in building; including R-2000, EnergyStar, and energy efficient Built Green™ homes, Kensington Master Builders has the capabilities, craftsmanship and expertise to capture your imagination and bring your dream home to life.

Occupant Comforts

- » Full point security system
- » Granite countertops with under mount sink in the kitchen
- » Moen Faucets
- » RG6 Data wiring in 4 locations
- » Generous light fixture allowance
- » 3" MDF casing and 4" MDF baseboard
- » Painted sturdy MDF closet shelving
- » Gas cock for BBQ
- » Choice of trim details

Warm and Dry Basements

- » Full ICF construction with System Platon membrane foundation wrap
- » R8 styrofoam insulation under the concrete slab

Lower Heating Costs by 50% or more

- » Air tight to <1.5 air changes per hour certified with blower door test by 3rd party auditor
- » Energuide 80 or better certified R-2000 &/or Built Green™
- » Spray foam insulation for air tightness and greater insulating value
- » Shredded blown in fiberglass for added warmth
- » R50 minimum blown in attic insulation
- » Fully insulated and drywalled garage with R12 insulated garage door/operator
- » Lennox G61MPV high efficiency furnace with ECM motor and programmable thermostat
- » High efficient 50 gal hot water heater
- » Triple glazed windows and French doors with Low E and argon
- » Gas fireplace with electronic ignition

Decreased Electricity Consumption

- » ECM motor on ventilation system
- » 75% CFL light bulbs
- » Master light and Phantom power switch

Superior Air Quality

- » Lennox Merv 10 air cleaner
- » Active Heat Recovery Ventilator
- » No VOC paints, No VOC MDF trim and shelving, Underlayment, glues and adhesives
- » 50% of the house is hard surface flooring
- » Ceiling fan
- » Vented built in vacuum system



Maintenance Free Exterior

- » Gentek Sequoia Vinyl siding, brick or stone trim details to Architectural Guidelines
- » Metal clad door jambs & soffit and fascia
- » Insulated Fiberglass exterior doors
- » Door/Window trim manufactured from recycled materials
- » 30 year Cambridge asphalt shingles with drip edge
- » Metal clad deck posts
- » Treated exterior wood deck construction with powder coated aluminum railing
- » Duramix concrete driveways, sidewalks and Cast in place front step

Environmentally Responsible

- » Advanced Framing Techniques including recycled wood, timberstrand headers, high heel trusses, truss joist floor systems, reduced waste
- » Dual flush toilets
- » Recirculating hot water line
- » Shut-off valves at all sinks and toilets
- » Recycle bins in the kitchen cabinets
- » Hardwood floors from sustainably managed forests (SCF certified)
- » Recycle content insulation, exterior and interior doors, finishing trim

Achievements

Canadian Home Builders' Association – Alberta

- » 2009 Awards of Excellence – Built Green™ Builder of the Year, The Willowgreene
- » 2008 Awards of Excellence – Green Vision, The Evergreene
- » 2008 Awards of Excellence – Best Home Over \$750,000, The Stoneridge

Alberta New Home Warranty Program Awards

- » Golden Hammer Award – 10 years as a Service Award Recipient
- » Distinguished Builder Medallion – 15 years as a Service Award Recipient

SAM Awards – Edmonton (Sales and Marketing)

- » Best Floor Plan
- » Best Curb Appeal

Cement Association of Canada Awards

- » Outstanding Energy Efficiency (0.2 ACH)

Memberships & Associations

- » Canadian Home Builders Association
- » Professional Home Builders Institute
- » Alberta New Home Warranty Program
- » Built Green™
- » R-2000



The Alberta
New Home
Warranty
Program



Kensington Master Builders

Office: 780 449 3137 Fax: 780 449 5077

191 Athabasca Avenue Sherwood Park, AB T8A 4C8

kensingtonmasterbuilders.com